

AMELS 188

TRUE BEAUTY REDEFINED



AMELS 

THE ART OF YACHT BUILDING

AMELS



AMELS 188



Tom Heywood



INDEX

EXTERIOR

LIMITED EDITIONS



SUN DECK SKY LOUNGE



BEACH CLUB AND WELLNESS CENTRE



MAIN DECK OWNER'S SUITE



OPEN SUN DECK



INTERIOR

REYMOND LANGTON



DESIGN INSIGHT



SPECIFICATION

FUTURE PROOF



CONFIGURATION



GENERAL DESCRIPTION AND MAIN PARTICULARS



HYBRID ENERGY



CONTACT

GET IN CONTACT WITH AMELS





AMELS 188

The completely new member of the Limited Editions family

- 57.70 metres (188 ft)
- 970 Gross Tonnage





LIMITED EDITIONS

Creating the perfect balance between full custom and semi-custom, the Limited Editions range has revolutionised high-end yachting – with more than 30 yachts delivered and in build.

- Six Tim Heywood designs from 55 to 83 metres (180 to 272 ft)
- Your choice of interior designer
- The absolute highest AMELS quality
- Built much faster than full custom
- Delivered on time and on budget
- Greater value



In this video Managing Director Rob Lujendijk describes our unique approach.

THE RENOWNED DUTCH YACHT BUILDER

"After 25 years of yacht building, we asked a fundamental question: how can we build a better superyacht, so our clients can realise their vision of luxury yachting more quickly and enjoyably? And so we arrived at a new concept, our AMELS Limited Editions range."

Rob Lujendijk, AMELS Managing Director



- Extremely comfortable underway and at anchor
- Smooth and stable thanks to seakindly hull





- 7 days autonomous luxury for 12 guests
- Highest level of service with 12 crew plus Captain





OPEN DECKS



- Balanced design with generous outdoor spaces
- (Limo) tender up to 7 metres (23 ft)



Tim Heywood's exciting and timeless design bears his signature shapely curves with toned, athletic lines.



SUN DECK SKY LOUNGE

- 22-metre long Sun Deck (72 ft)
- Five person 1,300-litre Jacuzzi
- 30 square-metre sky lounge (323 sq ft)
- Full option bar - the hub for entertaining
- Air-conditioned or fold away glass doors to let in warm sea breezes





A WORLD AWAY





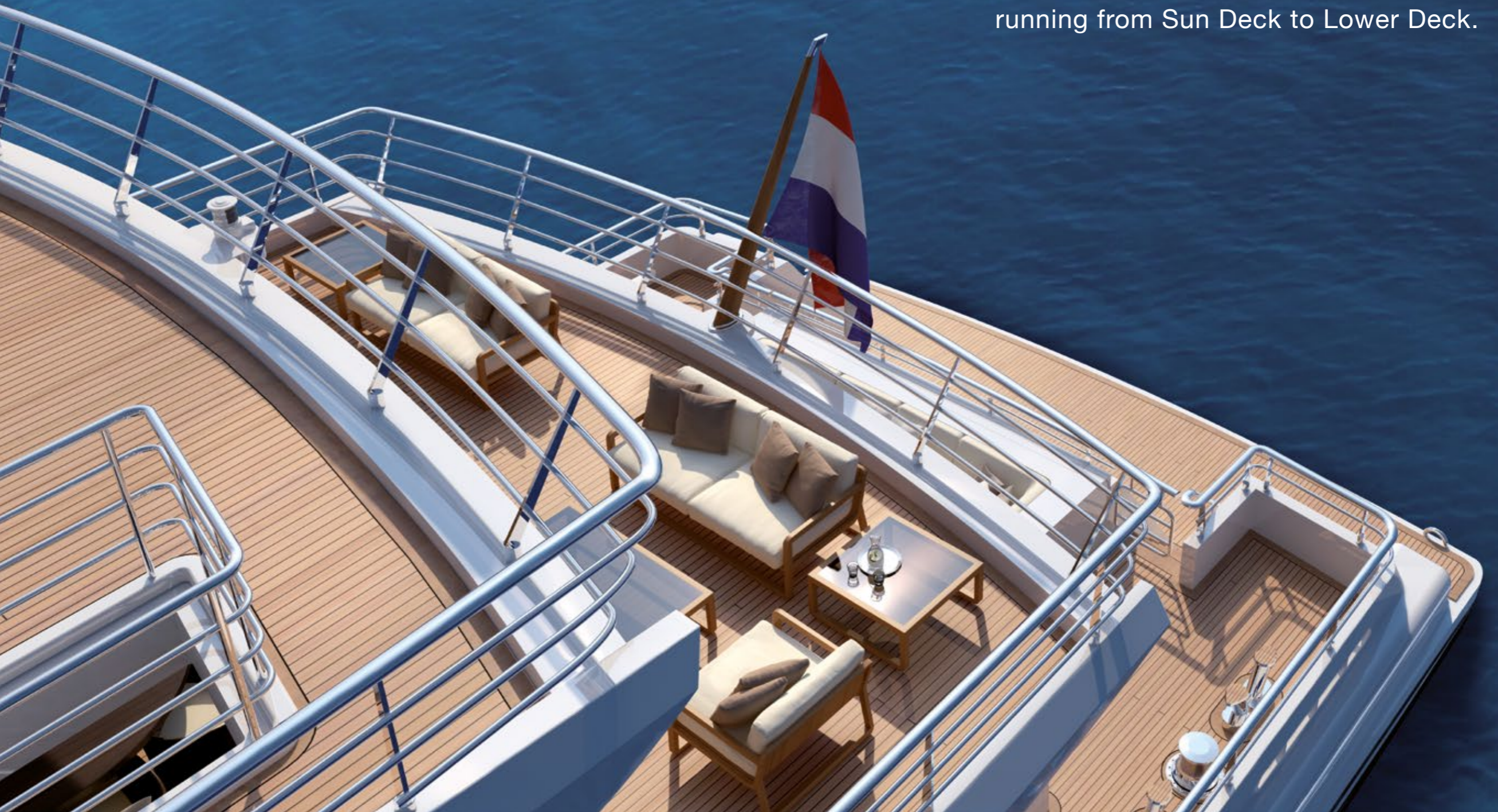
BEACH CLUB AND WELLNESS CENTRE

- Almost 30 square metres (323 sq ft) with gym, sauna and Turkish steam shower
- Directly connected via internal stairs to main saloon
- 15 square-metre (161 sq ft) swim platform – underwater body design eliminates unpleasant stern slamming
- Large, wide transom door



No compromises

Easily reach your favourite spots over the four guest decks, thanks to both the central staircase and elevator, running from Sun Deck to Lower Deck.





Exclusive atmosphere



Our advanced AMELS Hybrid Switchboard system delivers significantly lower Total Cost of Ownership.



FOLDING BALCONY FROM THE OWNER'S SUITE

Let the calming voice of the sea and fresh ocean air into your full beam Main Deck Owner's Suite with the very large 12 square metre folding balcony (130 sq ft).



Alternative layout
OPEN SUN DECK

Together with Tim Heywood, we've designed an alternative Sun Deck with almost 124 square metres (1,335 sq ft) for pure outdoor pleasure.



What are your unique requirements?



An elegantly integrated touch-and-go helipad for your Airbus H135 or similar with a maximum take-off weight of 3,000 kg.



The Wow Factor

PERSONALITY SHINING THROUGH



Complement the AMELS 188's eye-catching looks with a superbly executed paint scheme in co-operation with Tim Heywood and the AMELS Design team.



Reymond Langton

AMELS invited the design duo of Pascale Reymond and Andrew Langton to create their vision of AMELS 188's impressive interiors. Sculpted forms, fabrics and artworks capture their innovative approach.





Main Deck Saloon

Sliding glass doors open to the aft deck, while a subtle internal doorway leads down to the Beach Club and Wellness Centre.
Reymond Langton's design for the main saloon's dining table can be extended to seat 12.



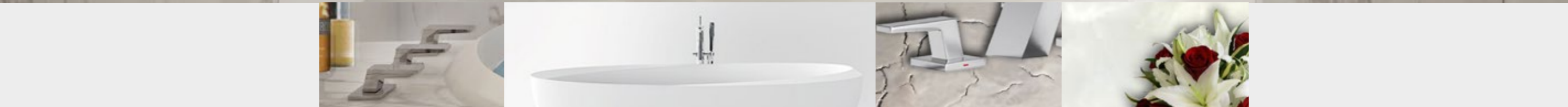
Owner's Suite Private Lounge

On Main Deck, the Owner's Suite covers almost 80 square metres (861 sq ft), with office, private lounge and stateroom with bathroom and dressing. High windows open and a large folding balcony connects to the sea.



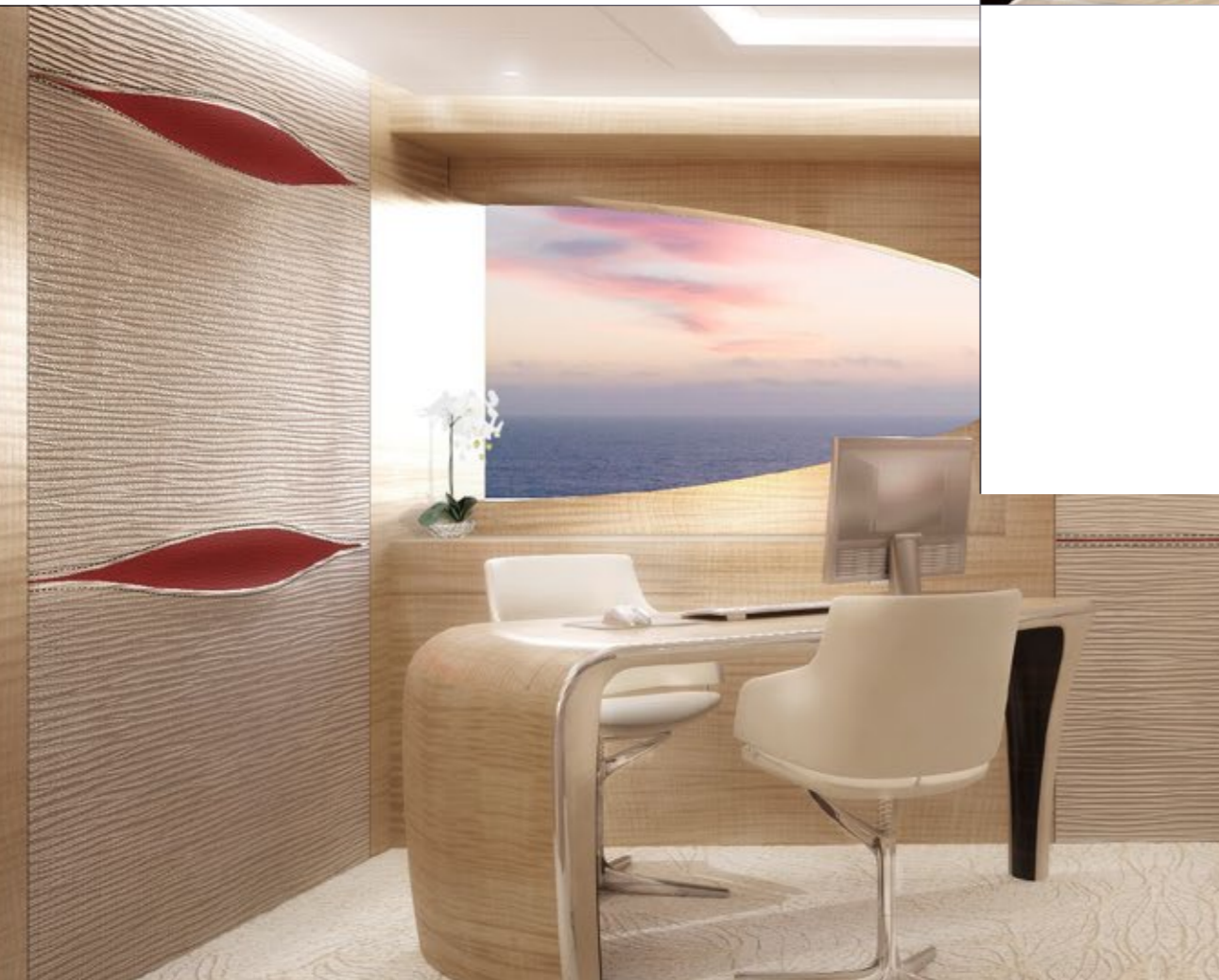
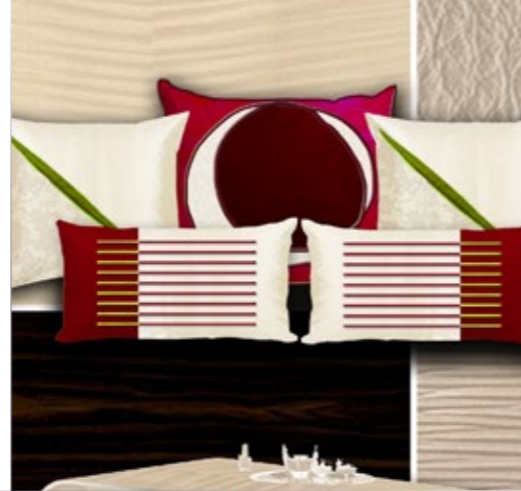
Owner's Suite Stateroom

Splitting the full-beam suite, sliding doors close to create an intimate and secluded stateroom.



Owner's Suite Bathroom

The beguiling bath tub stands out in Reymond Langton's soothing design, where white onyx and mirrors create a wonderfully light environment.



Owner's Office

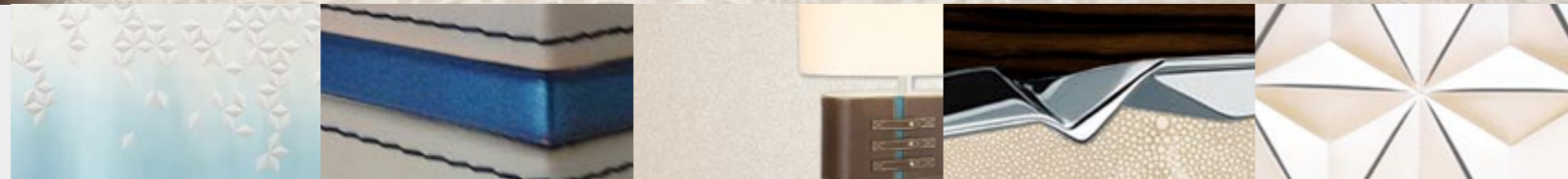
Sycamore wood and embossed taupe leather contrast with coloured leather recesses.





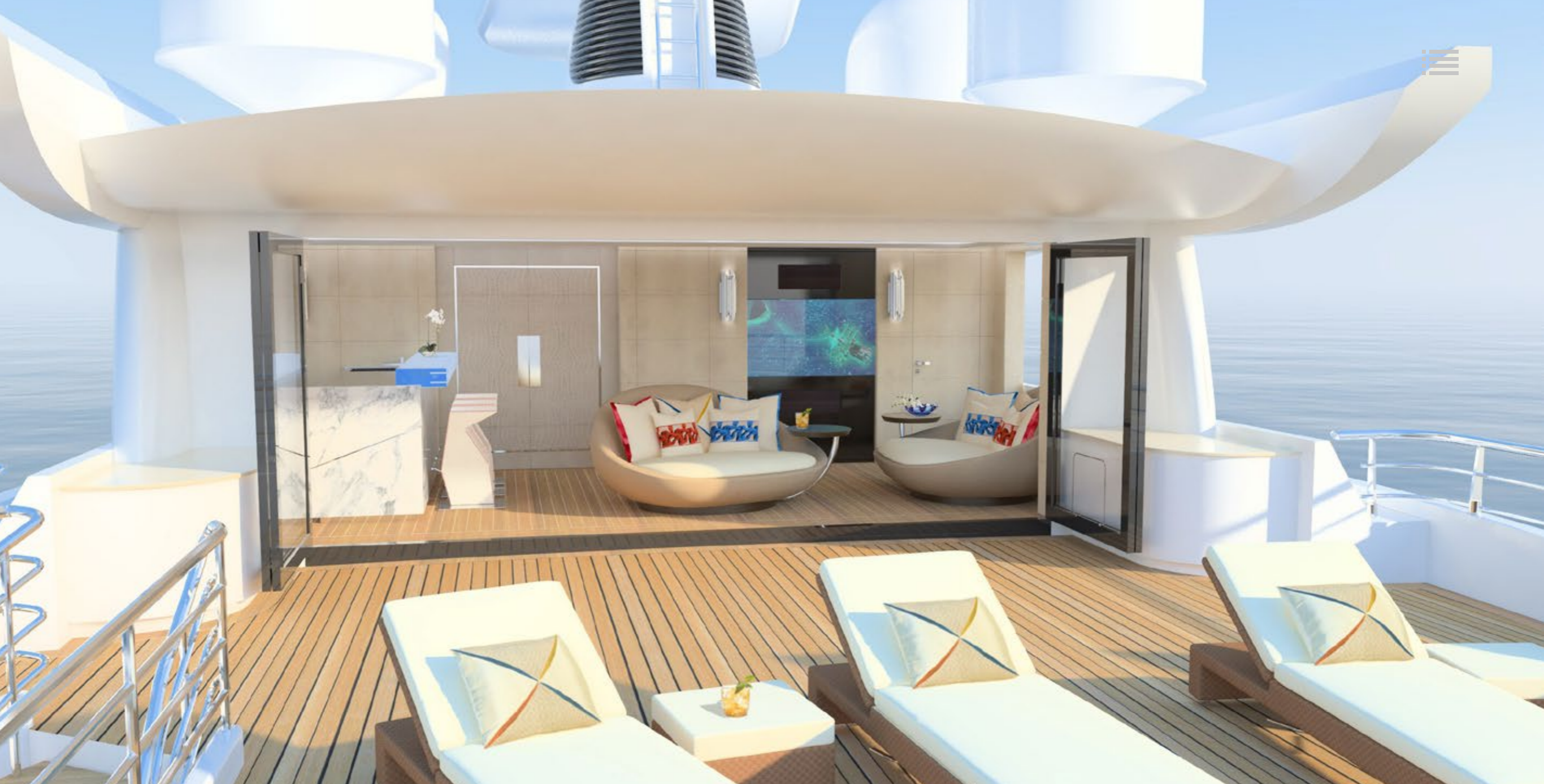
Bridge Deck Lounge

An exclusive space where your VIP guests can enjoy privacy and ocean views. Centrally, between the aqua blue glass sliding doors, the wall panels open to reveal a 105" television.



Bridge Deck VIP Suite

Beautiful hand-sculpted fabric panels carry through to this exclusive suite, which connects with the Bridge Deck lounge and aft deck.

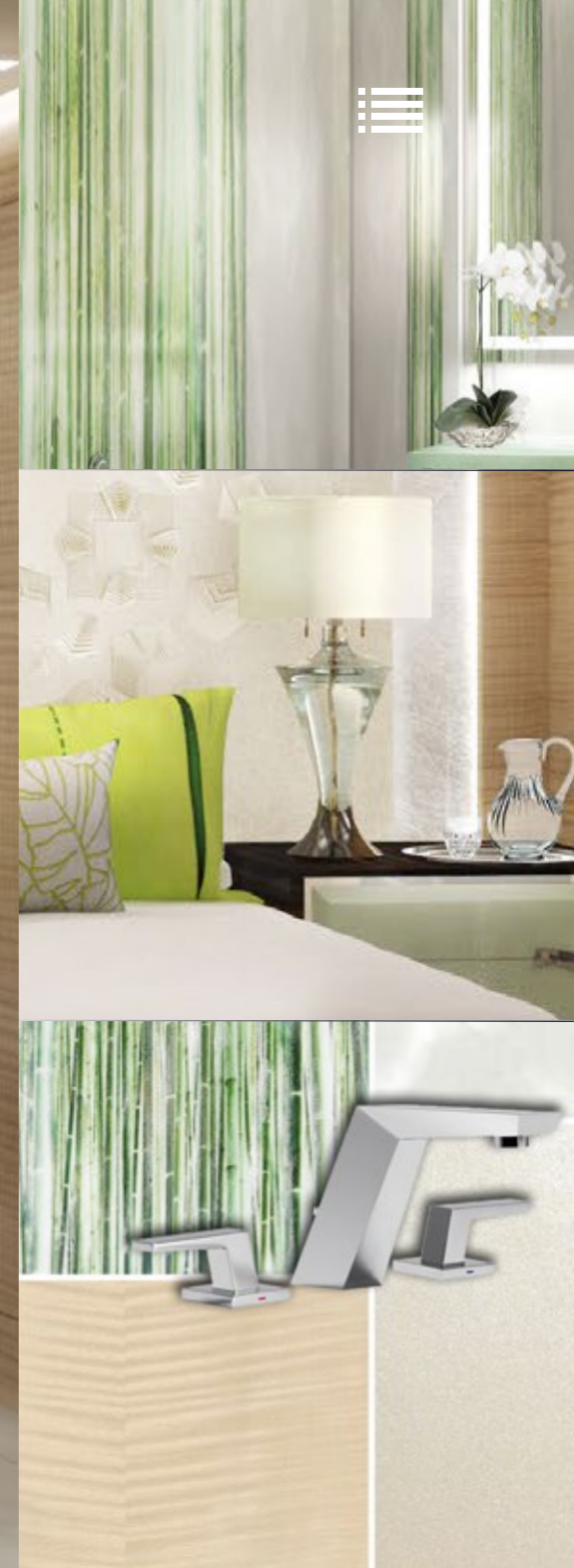


Sun Deck Sky Lounge

The aft deck sky lounge windows fold open, while sliding taupe leather doors lead forward to the foredeck Jacuzzi.



The Sun Deck aft beckons as night draws, when the lounge becomes the entertaining hub with its marble bar and backlit counter.



Lower Deck Guest Suite

The four spacious guest cabins on Lower Deck share design elements with the Owner's Suite and VIP Suite, but with fresh hints of pale mint green.



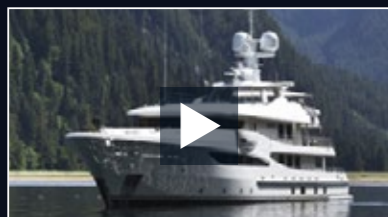
Lower Deck Guest Bathroom

Looking from the shower, the bathroom's glass and textured metals combine with refreshing and bright mint onyx marble.



Design Insight

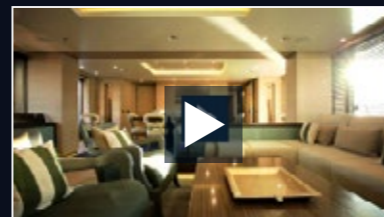
One of the great benefits of the Limited Editions concept is the freedom to choose your own interior designer and create your own individual vision of yachting at the highest level. AMELS has long experience working with the most renowned designers, bringing the unique vision of each Owner to life. The only constant is our meticulous attention to detail and the absolute highest quality of craftsmanship.



SPIRIT
AMELS 177
by Nuvolari Lenard



STEP ONE
AMELS 180
by Laura Sessa



ENGELBERG
AMELS 180
by Enzo Enea



EVENT
AMELS 199
by Laura Sessa



IMAGINE
AMELS 212
by Andrew Winch

AILEEN RODRIGUEZ - CHRISTIAN LIAIGRE - DONALD STARKEY - ENZO ENEA - LAMBERT & THURNHEER
LAURA POMPONI - LAURA SESSA - MICHAEL LEACH - NUVOLARI LENARD - PETER HEUVELMANS - RÉMI TESSIER
REDMAN WHITELEY DIXON - REYMOND LANGTON - TERENCE DISDALE - WETZELS BROWN - WINCH DESIGN



Future Proof

Tim Heywood

All six unique designs in the Limited Editions range feature the enduring beauty of Tim Heywood's characteristic signatures in synergy with the proven pedigree of AMELS engineering.

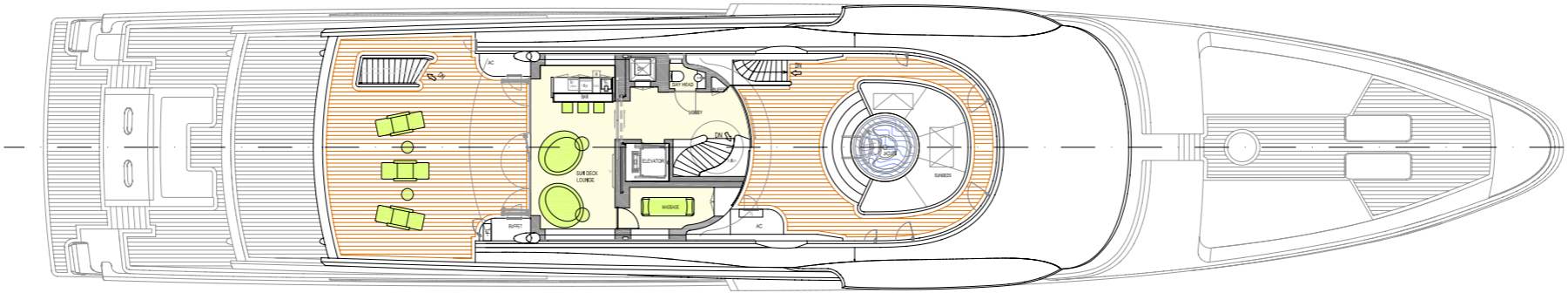
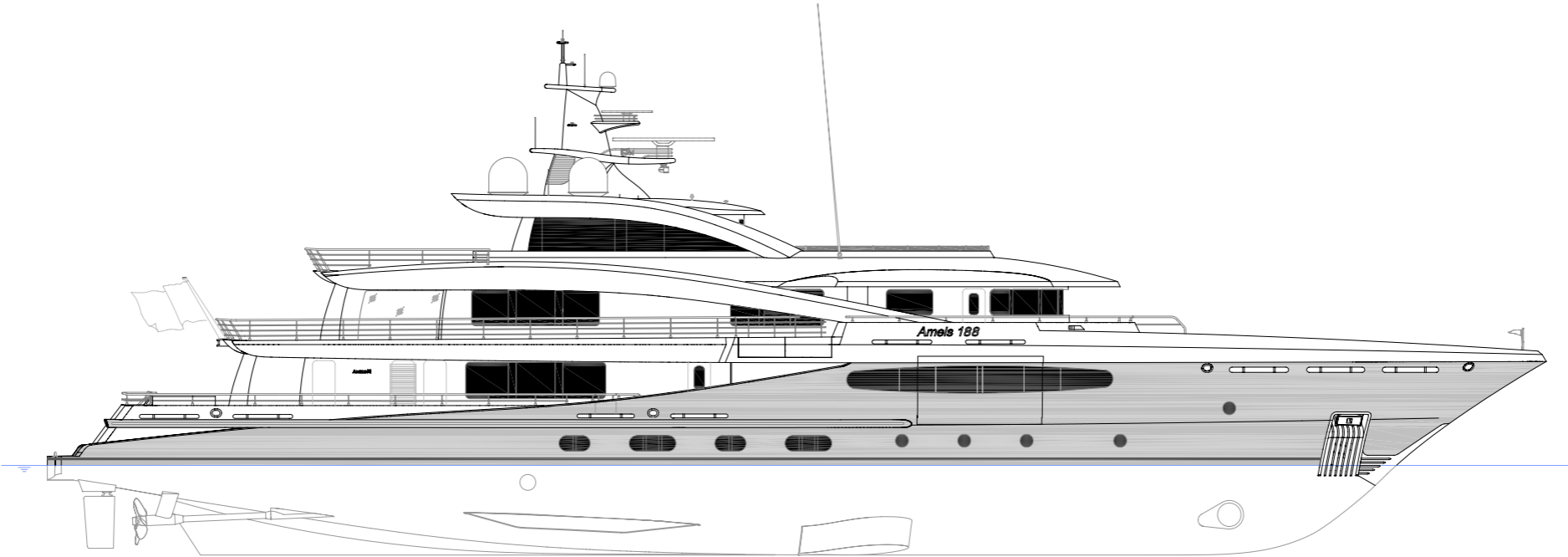


Listen as Tim Heywood describes his design philosophy in the long and successful collaboration with AMELS.



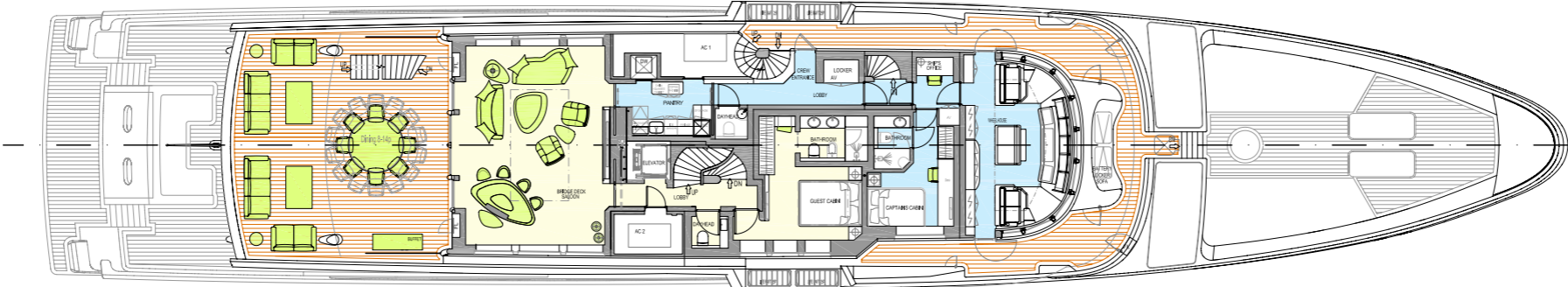


CONFIGURATION

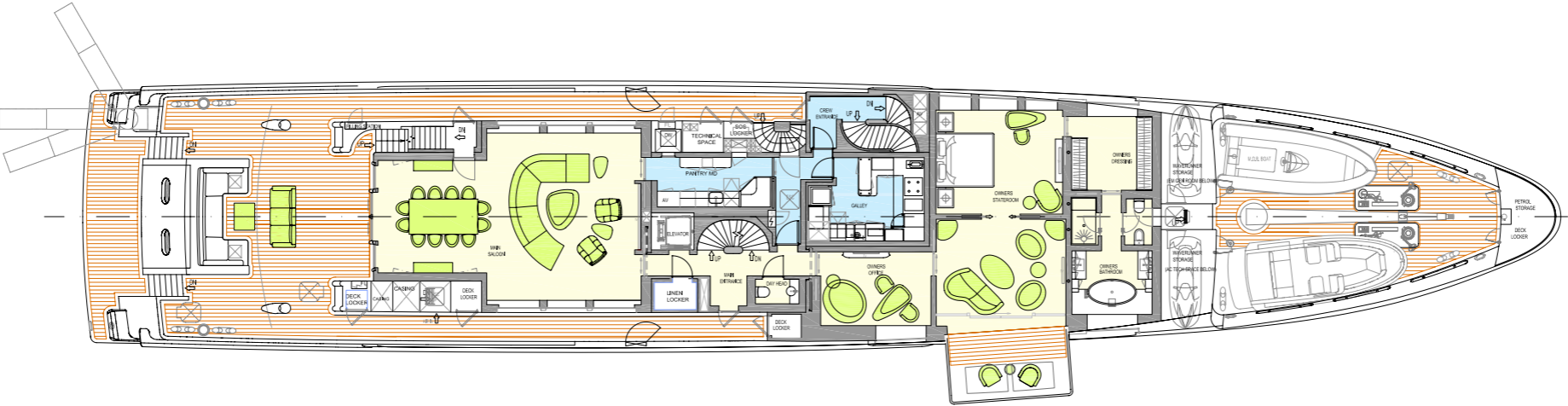


SUN DECK

CONFIGURATION



BRIDGE DECK

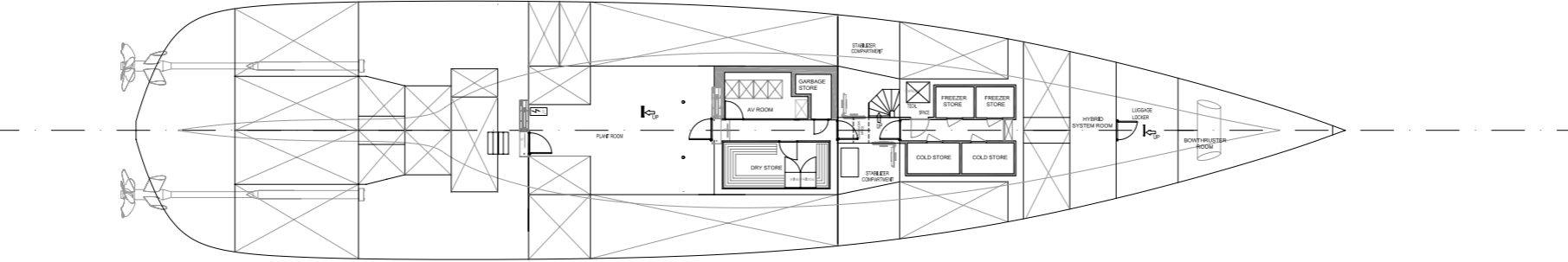


MAIN DECK

CONFIGURATION



LOWER DECK



TANK DECK



GENERAL DESCRIPTION

The 57.70-metre AMELS 188 (188 ft) is a full-displacement, twin-screw motor yacht with round-bilge steel hull and aluminium superstructure. A true ocean-going yacht, the AMELS 188 is Tier III compliant with an advanced AMELS Hybrid Power system.

The AMELS 188 accommodates 12 guests in the Owner's Suite, Bridge Deck VIP Suite and four wonderfully spacious king size Lower Deck Guest Suites.

MAIN PARTICULARS

LENGTH OVERALL	57.70 METRES (188 FT)
LENGTH WATERLINE	51.93 METRES (170 FT)
BEAM OVERALL (AT HULL)	10.60 METRES (35 FT)
DEPTH (MIDSHIPS)	5.20 METRES (17 FT)
DRAUGHT (FULL LOAD)	3.45 METRES (11 FT)
DISPLACEMENT	950 TONNES
GUESTS	12
CREW	12 + CAPTAIN
TENDERS	1 X 7.00 METRES (23 FT) 1X 6.20 METRES (20 FT)
SPEED (MAX. AT 100% MCR)	15.5 KNOTS
SPEED (CRUISING)	13.0 KNOTS
RANGE @ 13 KNOTS	4,500 NAUTICAL MILES
FUEL CAPACITY	143,000 LITRES
FRESH WATER CAPACITY	24,000 LITRES
GROSS TONNAGE	970



GENERAL SPECIFICATIONS

CLASSIFICATION

Lloyd's Register \times 100A1 SSC Yacht Mono G6 [x] LMC, UMS,
SCM MCA LYC-3

FLAG

Cayman Islands

EXTERIOR

Teak decks with grade quarter-sawn 55 mm wide teak / stainless-steel railings and cap rails / glass windscreens / tinted double-glazed windows

DECK EQUIPMENT

Stern passerelle / Two vertical anchor winches with warping head / Two capstans aft / Foredeck crane used for launching MOB / Tender / Wave runners / Jacuzzi on sundeck with sunbeds

TENDERS / WATERSPORTS EQUIPMENT

Provisions for 1x 7.0 metre and 1x 6.2 metre tenders + two waverunners

LUXURY INTERIOR

Extensive luxury accommodation per General Arrangement.
The layout is arranged for efficient operation: Food lift from main deck to sundeck / central staircase / luxury elevator on four decks / separate crew quarters / central pantries on main and bridge deck / main deck galley / tank deck with cold and freeze store and dry store

NOISE LEVEL AT CRUISING SPEED (13 KNOTS)

Main saloon	55 dB(A)
Sky lounge	50 dB(A)
Guest suite Bridge Deck	50 dB(A)
Wheelhouse	50 dB(A)
Owner's suite	50 dB(A)
Guest suites Lower Deck	53 dB(A)
Crew mess	54 dB(A)

ENTERTAINMENT

Full entertainment system with Satellite TV / audio and video on demand / internet in saloons, guest cabins and owners' & crew areas

NAVIGATION EQUIPMENT

Integrated Navigation System / gyro and magnetic compass / X-band radar / S-band radar / autopilot / speed log / echo sounder / DGPS / ECDIS / conning / wind measurement equipment / AIS

COMMUNICATIONS

According to GMDSS Area 3, Inmarsat F, Telephone installation, Intercom

VENTILATION & AIR-CONDITIONING

Heinen & Hopman HVAC system.

Design (summer) conditions: outside air 35°C @ 75% relative humidity / Inside 22°C @ 55% relative humidity

FIREFIGHTING

A high-pressure water mist fire extinguishing system is fitted to protect the accommodation, service and machinery spaces

ELECTRICAL INSTALLATION

Two generator sets, 1x 185 ekW - 1x 250 ekW, 3-phase 230/400 VAC, 50 Hz / Emergency generator set, 109 ekW / 250-KVA shore-power connection 360A/ Hybrid energy storage system, max power 84 kW - Total capacity 56 kWh



PROPULSION

Two MTU 12V4000 M53 diesels, 1,380 kW @ 1,800 rpm each, resilient mounts / Reintjes WAF 763 gearboxes / Rubber Design shaft line arrangement / fixed-pitch five-blade CuNiAl propellers

EXHAUST

Tio silencers and seawater cooling / below-waterline discharge for main engines / soot filters for main generator exhausts

BOW THRUSTER

Electrically driven: 130 kW

STABILISERS

Quantum zero-speed stabilizer (design speed 13 knots)

FRESH WATER

Two Hydrophore pumps / three hot-water boilers / hot and cold water circulation system / two Idromar reverse-osmosis watermakers 9.000 ltr/day each

SEWAGE TREATMENT

Vacuum toilet sanitary system / Chemical black-water treatment

ECO AND ENVIRONMENT

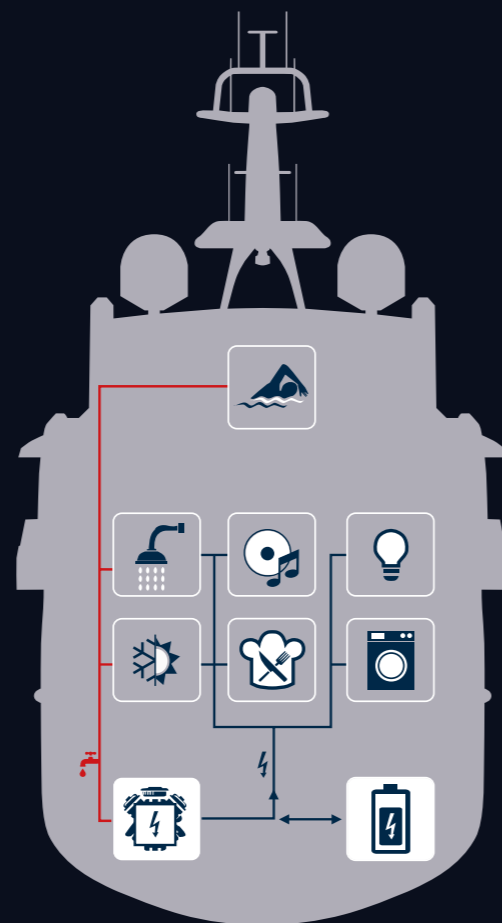
Waste heat recovery for potable water, pool heating and HVAC reheating
Hybrid switchboard for peak shaving and efficient generator operation
Exhaust IMO Tier III compliant



HYBRID ENERGY

THE POWER OF SMART EFFICIENCY

AMELS is leading a new generation of engineering best practice to manage power on board responsibly and use energy more efficiently. It's a holistic approach, finding smart ways to reuse energy on board. The result is fast Return on Investment and lower Total Cost of Ownership.

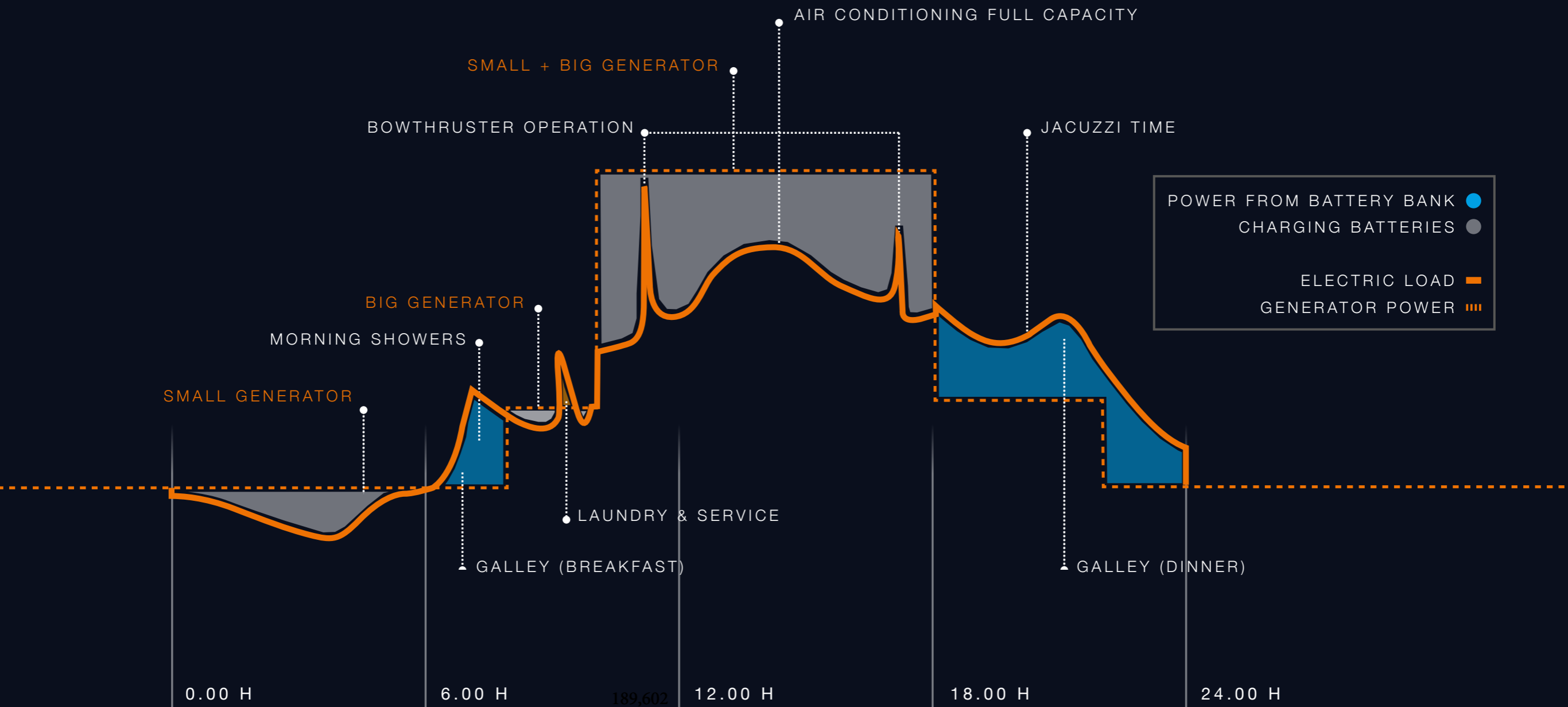


HOW DOES THE AMELS HYBRID SWITCHBOARD BENEFIT OWNERS?

- SIGNIFICANTLY LOWER OPERATING COSTS
- HYBRID POWER GENERATION WITH BATTERY BANK – PEAK SHAVING AND MANAGED LOAD SHEDDING
- WASTE HEAT RECOVERY IMPROVES HVAC EFFICIENCY, HEATS THE JACUZZI AND POTABLE WATER
- TIER III COMPLIANT ENGINES
- HAPPY CHIEF ENGINEER!



A DAY IN THE LIFE OF YOUR AMELS HYBRID SWITCHBOARD SYSTEM





WHY AMELS

- 1. Enrich your finest moments in life**
- 2. World-renowned icon of yacht building**
- 3. Our pioneering Limited Editions range**
- 4. Top designers with AMELS Full Custom**
- 5. Worldwide customer care, After-Sales to Refit**
- 6. Holland home of yachting, 700 years of shipbuilding**
- 7. The best and largest yacht building facilities**
- 8. AMELS collectors' items, a smart investment**
- 9. The Damen family's shipbuilding powerhouse**
- 10. DAMEN Yacht Support and DAMEN SeaXplorer**



GET IN CONTACT WITH AMELS

Call Managing Director Rob Luijendijk on +31 118 485002

info@amels-holland.com

www.amels-holland.com

Discover more about
the AMELS yard in Holland.



DISCLAIMER

All information, specifications, descriptions, and images in this brochure are considered preliminary, non-binding and subject to change by AMELS. No images herein may be reproduced in any form without written permission of AMELS.

AMELS 188 BROCHURE DIGITAL VERSION 1.5